



SOUND SUPPLIER

GENERAL

Type:	Multi Purpose Vessel Euro Carrier 2611
Built:	2015
Class:	Bureau Veritas I ✳ HULL ● MACH Special Service/ Multi purpose ship Unrestricted navigation ● AUT-UMS Gibraltar
Flag:	Gibraltar
Dimensions O.A (draft):	26,48mtr x 11,0mtr x 2,93 mtr
GRT:	149 MT
IMO number:	9732711
Call sign:	ZDPO9
Port of registry:	Gibraltar

PERFORMANCE

Speed free running:	10,5 knots
Bollard pull:	38 ton

TANK CAPACITIES

Fuel oil:	106 m ³
Dirty oil:	2 m ³
Fresh Water:	49 m ³
Bilge water:	8 m ³
Lube oil:	3,8 m ³
Sewage:	4 m ³
Hydraulic oil:	1,9 m ³

AUXILIARY EQUIPMENT

Main generator sets:	2 x Caterpillar C9,
Capacity:	2 x 250 kVA/200 kW, 50Hz, 230/400V
Additional generator:	1 x Caterpillar C4.4 106kW
Hydraulic set:	2 x 90 kW electrical motor pumps
Fuel oil separator:	Westfalia 1740

PROPULSION

Propellers:	2 x 1850 mm Skew-Edge Van Voorden in nozzles
Total power:	1940 bkW (2600 bhp) at 1800rpm
Main engines:	2 x Caterpillar C32 acert C rating
Bow thruster:	280 kW C-systems 1000

DECK

Deck Crane:	1 x Heila HLRM 230-4SLK 1 x Heila HLRM 140-3S
AH/Towing winch:	1 x 100 ton at 9 m/min low speed or 18 m/min at high speed, 1 x 50 ton 7 m/min low speed or 21 m/min high speed
Tugger winch:	1 x 15 MT
Deck carrying capacity:	6 MT/sqm
Clear deck space:	150m ² approx
Bow roller:	6000 mm x 1220mm dia
Stern roller:	5000 mm x 900 mm dia

NAVIGATION EQUIPMENT

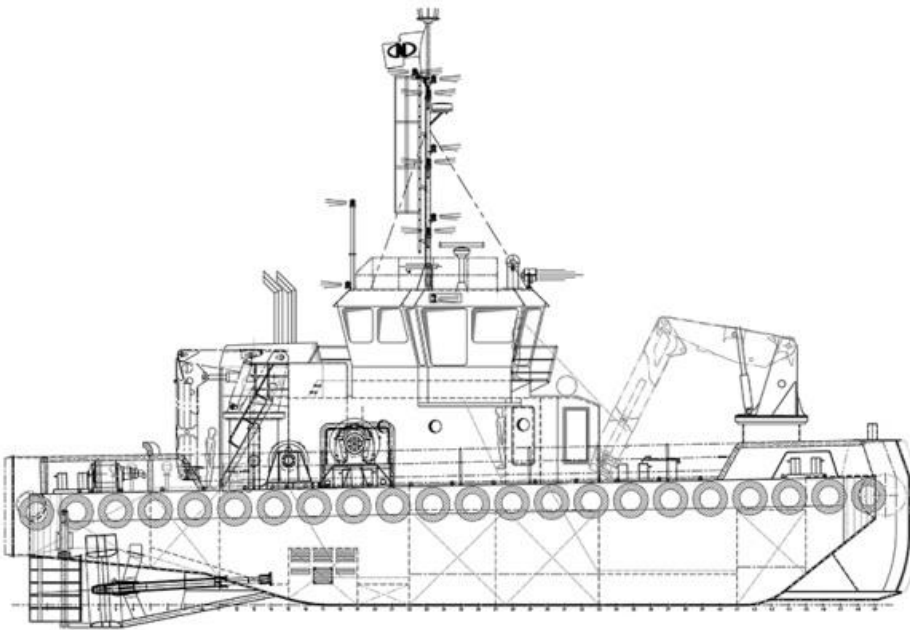
Magnetic compass:	1 x Cassens and Plath type reflecta 1
Satellite compass:	1 x Furuno type SC-50
RADAR:	1 x Furuno type FAR-2117
DGPS:	1 x Furuno type GP-150D
Autopilot:	1 x Radio Zeeland type Seapilot 75
AIS:	1 x Furuno type FA-150
Echosounder:	1 x Furuno type FE-800
VHF/DSC:	2 x Thrane and Thrane type Sailor 6222
Handheld VHF:	2 x Jotron TR-20 (GMDSS emergency)
MF/HF:	1 x Furuno type SSB FS-1575
Navtex:	1 x Furuno type NX-700A
Immarsat C:	2 x Furuno Felcom-18
Search light:	2 x 230V-1000W (1 forward, 1 aft)

ACCOMMODATION

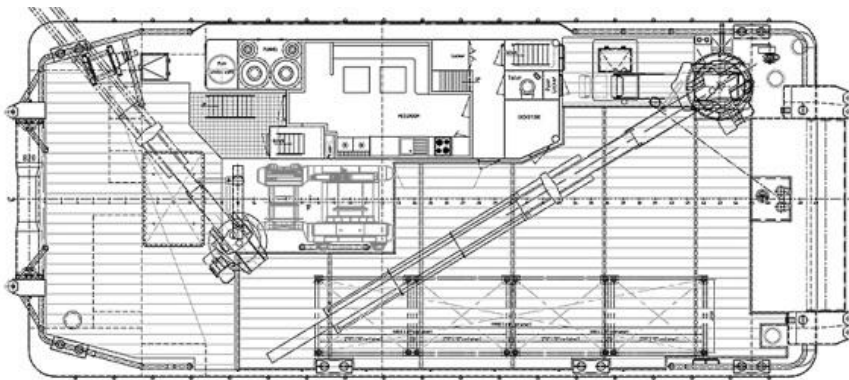
Heated and air-conditioned living spaces for seven persons, consisting of 3 single crew cabins and two double crew cabins, a galley/mess and sanitary facilities.



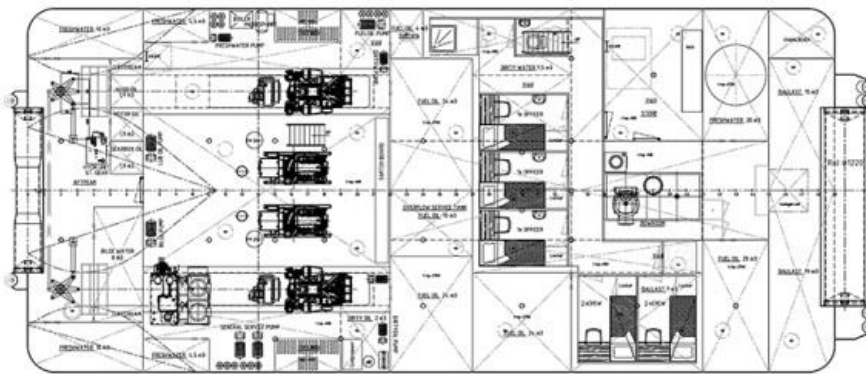
For contact details please visit
our website www.sse-ab.se



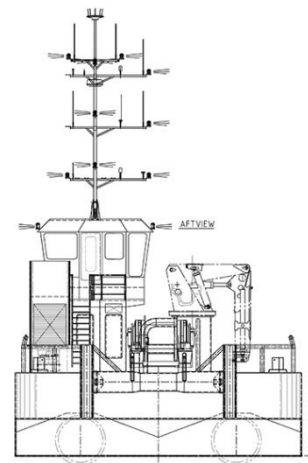
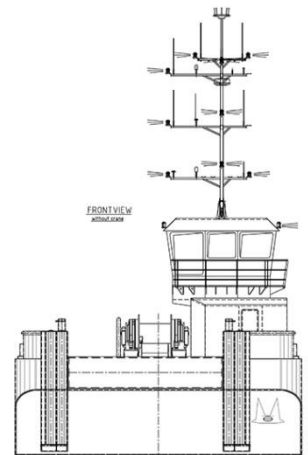
SIDE VIEW



MAINDECK



BELOW MAINDECK



SOUND SUPPLIER

For contact details please visit
our website www.sse-ab.se