



# SOUND SUPPORTER

## GENERAL

Type: Euro carrier 2008, Multipurpose Vessel  
 Built: 2005, Neptune Shipyards, Aalst, The Netherlands  
 Class: I \*Hull • Mach Special Service/Workboat Coastal Area  
 Trade area: Max. 20 NM off the coastline  
 Flag: Swedish  
 LOA: 19,83 m  
 Breadth: 8,06 m  
 Maximum draft: 2,70 m  
 GRT: 110 MT  
 Lightship: 168,7 MT  
 Call sign: SLDI  
 Port of registry: Malmö, Sweden

## PERFORMANCE

Speed free running: 10 knots  
 Bollard pull: 15 ton  
 AH/Towing winch: 50 ton at 6m/min at low speed  
 17 ton at 18 m/min at high speed

## TANK CAPACITIES

Fuel oil: 36 m<sup>3</sup>  
 Dirty oil: 0,5 m<sup>3</sup>  
 Fresh Water: 36 m<sup>3</sup>  
 Sewage: 0,5 m<sup>3</sup>  
 Hydraulic oil: 0,9 m<sup>3</sup>

## AUXILIARY EQUIPMENT

Main generator sets: 2 x Volvo Penta D7  
 Capacity: 2 x 70 kW  
 Additional generators:  
 Electric hydraulic pump for cranes & winches

## DECK

Deck crane: Heila HLRM 80-3S, SWL 20 MT  
 Deck carrying capacity: 6 MT/sqm

## ACCOMMODATION

Heated and air-conditioned living spaces for four persons, consisting of two double crew cabins, a galley/mess and sanitary facilities.

## NAVIGATION EQUIPMENT

Searchlights: Sunbeam 250W  
 Magnetic compass: Cassen & Plath Reflecta 5  
 Satellite compass: Furuno SC-60  
 RADAR: Furuno FR-1505 MK3  
 DGPS 1: Furuno GP-90,  
 DGPS 2: Leica 1200 with RTK capacity  
 AIS: Furuno FA-150 class A  
 Echosounder: Furuno FCV-582L  
 VHF/DSC: 2 x Furuno FM-8500  
 Navtex: Furuno NX-500  
 Autopilot: Radio Zeeland Seapilot 75

## PROPULSION

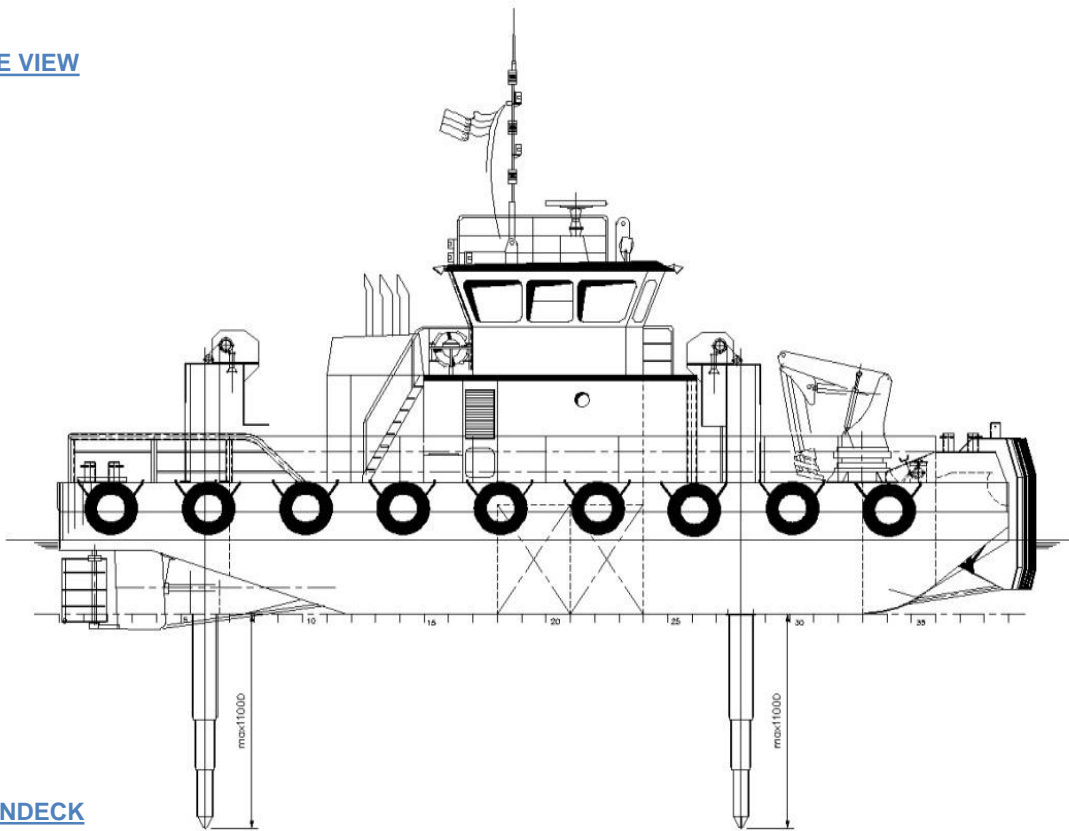
Propellers: Fixed, various revolution.  
 Total power: 954 kW  
 Main engines: 2 x Volv Penta TAMD 165A

*Details believed to be correct but not guaranteed and can be subject to change.*

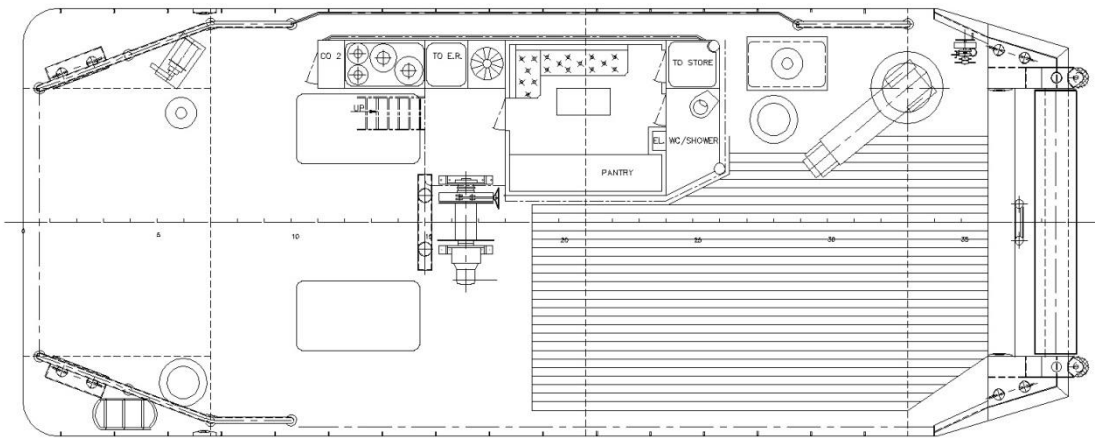


**For contact details please visit  
 our website [www.sse-ab.se](http://www.sse-ab.se)**

## SIDE VIEW

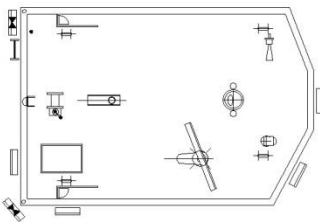


## MAINDECK

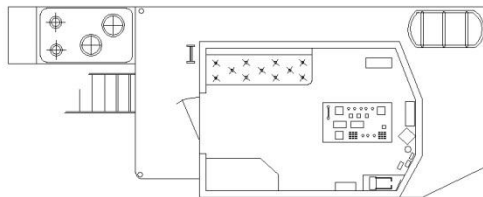


## ACCOMODATION

### TOPDECK



### BRIDGE-DECK



Details believed to be correct but not guaranteed and can be subject to change.

**SSE**  
ett företag i MarCon gruppen

# SOUND SUPPORTER

For contact details please visit  
our website [www.sse-ab.se](http://www.sse-ab.se)