

## JACK II – SELF PROPELLED MINI JACK-UP PLATFORM

Jack II is a self propelled fully hydraulic multi-purpose, four legged mini jack-up platform. The platform can be elevated out of the water and made completely independent from vulnerable inclement weather and tidal conditions.

The Jack II jack-up is an ideal craft capable of working safely in both confined inter-tidal areas and exposed shallow open seas, where swift, accurate manoeuvring and positioning is required.



Traditional methods of working in a marine environment usually involves the use of floating plant such as ships and barges however this method is susceptible to bad weather.

The use of a jack-up platform permits work to be carried out in similar conditions to those on land, specific benefits when using a jack-up platform compared to more traditional methods are: speed of operation, elimination/reduced downtime due to adverse weather, better quality of work for example drilling works, improved working and safety conditions and minimum interference to other marine traffic.

The introduction of a static platform further permits modern sophisticated techniques for marine testing such as cone penetration testing of the seabed etc.

**Malmö**  
Oljevägen 14  
211 24 Malmö  
040 – 93 30 00

**Sölvesborg**  
Hamngatan 1  
294 31 Sölvesborg  
0456 – 141 66

**Ängelholm**  
Box 1129  
262 22 Ängelholm  
0431 – 256 20

**Stockholm**  
Bergsgatan 53  
112 53 Stockholm  
08 – 650 71 14

**Org.nummer**  
556223-2172  
**Internet**  
[www.sse-ab.se](http://www.sse-ab.se)

Based on the above it can therefore be established that the Jack II is an ideal platform for the use in all near shore working environments.

Jack II has a rapid deck elevating system and is equipped with four legs mounted internally to provide maximum stability.

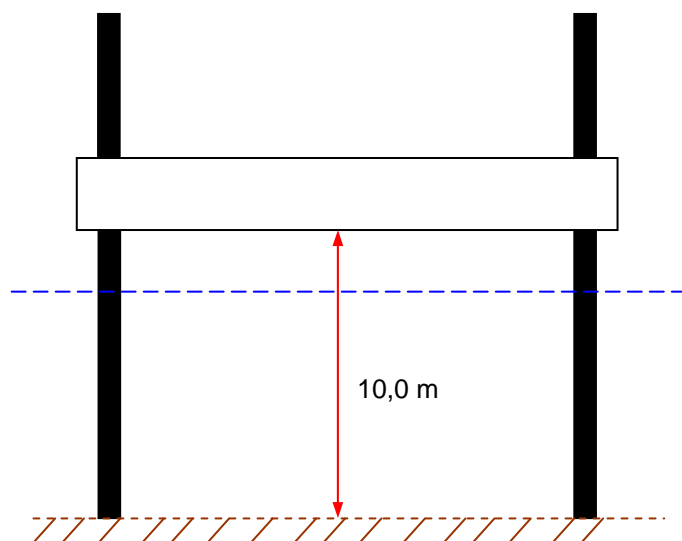
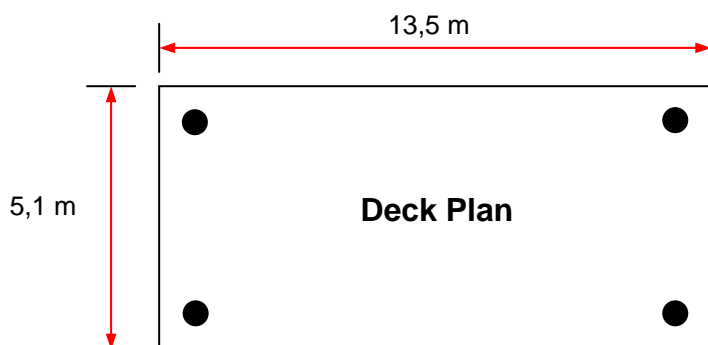
For maximum safety, rigid steel bulwarks surround the deck, while 110V fluorescent lights provide full inboard and outboard illumination for 24 hour working. The jack-up is equipped with a small 0.75 ton working crane, a moon pool for vertical drill holes, 4 anchor winches, VHF radios, life saving and first aid equipment.

The Jack II can also be used as a floating barge and has 4 No. hydraulic winches for anchoring and fine positioning and the legs can be used as spud legs.

Operated and maintained exclusively by trained and experienced our marine engineers, the Jack II jack-up offers a versatile, stable and self-elevating platforms for all types of over-water work.

### Technical Specifications

Length/Breadth	13,5 /5,1 m
Deck area (Working Area)	31m <sup>2</sup> with extra 5 m <sup>2</sup> at bow
Working draft	1,5 m
Draft	2,5 m
Leg size	600mm diameter x 12m
Payload (evenly distributed)	20 tons
Power Supply	380 volts AC Gen
Elevating system	hydraulic rams
Accommodation	Wheel house
Small working Crane	1No. 750kg
Anchor Winches	4 No. Hydraulic



**Elevation**

**Malmö**  
Oljevägen 14  
211 24 Malmö  
040 – 93 30 00

**Sölvesborg**  
Hamngatan 1  
294 31 Sölvesborg  
0456 – 141 66

**Ängelholm**  
Box 1129  
262 22 Ängelholm  
0431 – 256 20

**Stockholm**  
Bergsgatan 53  
112 53 Stockholm  
08 – 650 71 14

**Org.nummer**  
556223-2172  
**Internet**  
www.sse-ab.se