



# SOUND PROSPECTOR

## GENERAL

Type: Jack-Up Barge (not self propelled)  
 Built: 2007 June, rebuilt 2009  
 Class: Germanischer Lloyd  
 Hull: ✱ 100 A5 K with freeboard 0.787 m  
 Self Elevating Unit  
 Machinery: ✱ A-MC  
 Swedish  
 Flag: Swedish  
 LOA: 31.85 m  
 Breadth: 20.00 m  
 Maximum draft: 2.98 m (4.50 m with spud cans mounted)  
 Lightship: 535 MT  
 GRT: 620 MT  
 Call sign: SDKF  
 Port of registry: Malmö, Sweden

## TANK CAPACITIES

Fuel oil: 12,7 m<sup>3</sup>  
 Dirty oil: 0,5m<sup>3</sup>  
 Fresh Water: 40 m<sup>3</sup>  
 Sewage: 7 m<sup>3</sup>  
 Hydraulic oil: 3 m<sup>3</sup>

## AUXILIARY EQUIPMENT

Main generator sets: 2 set Powerpack VP D9  
 Capacity: 2 x 250 kva  
 Additional generators: 1 set Powerpack VP D5 77 kva

Electric hydraulic pump for cranes winches: 1 set 50 kW

## DECK

Deck crane: HS Marine AK99HE3  
 Deck carrying capacity: 400 MT (evenly spread out)  
 Clear deck space: 370 m<sup>2</sup> (without optional accommodation)

## ACCOMMODATION

Fixed accommodation: 2 x 1 person cabins  
 Optional accommodation: 9 x 2 person cabins. Access to changing room, showers and full equipped laundry room.  
 Onboard are life saving equipment for a total 25 persons (incl. Crew)

## NAVIGATION EQUIPMENT

Searchlights: Seematz 1 x 1000W, 1 x 500W  
 Magnetic compass: Reflecta/1/Fiberline  
 Satellite compass: Furuno SC – 50  
 RADAR: 1 x Furuno FR = 1 505 mkl 1  
 GPS: Furuno GP – 90  
 AIS: Simrad A180  
 Echosounder: Furuno FE – 700  
 VHF/DSC: 2 x Sailor RT4822 with DSC  
 1 x Sailor 6210 DSC  
 SSB/DSC: SP – radio type 4500 with DSC  
 Navtex: Furuno NX 700

## JACK-UP SYSTEM

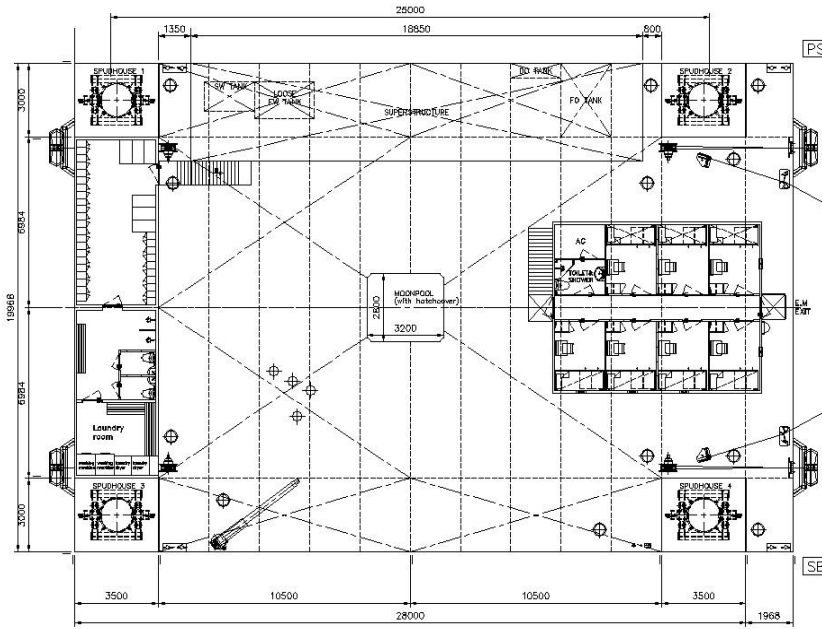
Main engines: 4 set Electric hydraulic pumps 75 kW/set  
 Leg length: 50 m

*Details believed to be correct but not guaranteed and can be subject to change.*

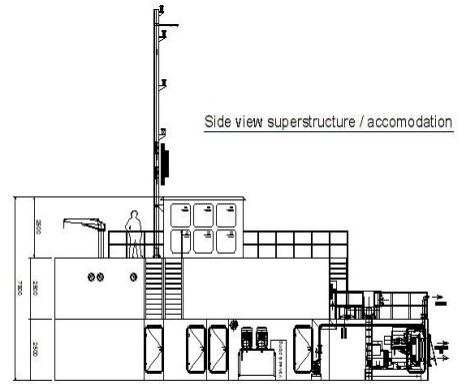


**For contact details please visit  
 our website [www.sse-ab.se](http://www.sse-ab.se)**

## MAINDECK

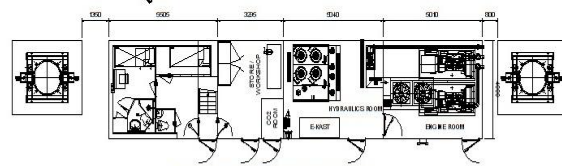


## ACCOMODATION

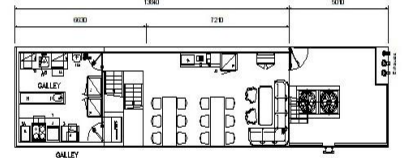


Side view superstructure / accomodation

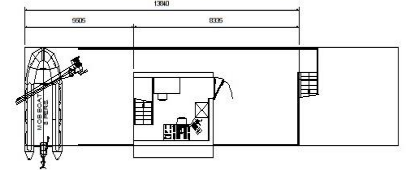
Top view accomodation above maindeck



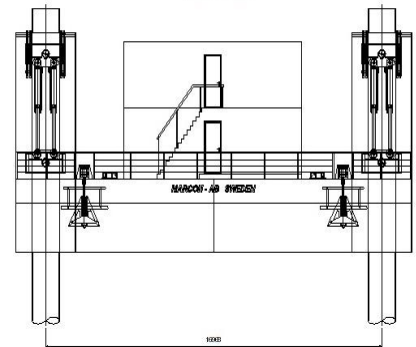
Top view accomodation 1st floor



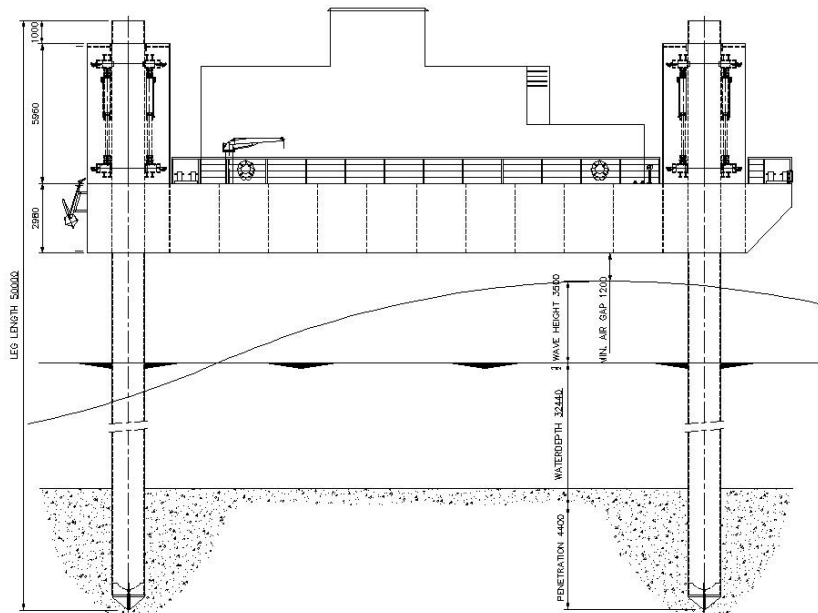
Top view accomodation 2nd floor



Front view



## SIDE VIEW



Details believed to be correct but not guaranteed and can be subject to change.

**SSE**  
ett företag i MarCon gruppen

# SOUND PROSPECTOR

For contact details please visit  
our website [www.sse-ab.se](http://www.sse-ab.se)